

60455 U.S. 31 South * South Bend, Indiana 46614 * Telephone (219) 291-2300

Aug/Sept/Oct 1994

Editor: Rick Glassman
Beth Gushwa

ST. JOE VALLEY PHEASANTS FOREVER FORMED

Elkhart and St. Joe Counties recently formed a local Pheasants Forever Chapter. Pheasants Forever is a nonprofit conservation organization nationally founded in 1982. This was in response to the decline of the ring-necked pheasant population. Pheasants Forever is dedicated to the protection and enhancement of pheasants and other upland wildlife through habitat improvement, public awareness and education, and land management that benefits farmers and wildlife alike.



The St. Joe Valley Pheasants Forever is just getting started and is seeking conservation minded land owners who would be interested in learning more about the program. The main focus will be on habitat restoration. Land will be evaluated in several areas to determine if it could sustain the proper equation for supporting a pheasant population. By participating in the program, the landowner is not under any obligation to allow hunting on his/her property. Anyone interested in more information can contact Derrick Hendricks at 262-0896, or Jerry Dominiack at 273-8689.

NACD "BOUNCEBACK" PROGRAM

Mushroom Pots - Morel Habitat Kits - Beneficial Insects - Vispore Tree Mats - Supertube Treeshelters

What do all of these items have in common? They are products that are available to order year-around through

the St. Joseph County SWCD or NACD's National Association of Conservation Districts. A new "Bounceback" flyer has just arrived listing in detail, all items available to purchase. The Mushroom Pots have three different varieties: Shitake, Hericium and Pleurotus (Oyster Mushroom). The Morel Habitat Kit supplies you with 10 pounds of Morels the second year. These kits can be planted in your own backyard. For the best chance of a spring crop, you need to plant the kit by the 1st week of August. The Beneficial Insects include Praying Mantis, Predator Nematods and Ladybug Beetles, which are environmentally safe for your garden, pets and children. These friendly pests work around the clock, attacking and eating your garden pests. The Vispore Tree Mats help block weeds and not water on your newly planted tree seedlings. No maintenance is involved and the mats can be used with blowers and will last up to 4 years. The Supertube Treeshelters are protective covers that enhances and protects valuable trees from animal, mower and herbicide damage, seasonal winds and droughts. You will get seven (7) years of protection and a dramatic increase in the growth of your plants for about \$.25 per plant per year.

If you are interested in receiving a "Bounceback" brochure, please call our office at 291-2300 or 1-800-825-5547. All of the products carry a 100% guarantee or the item(s) will be replaced free of charge. Credit card orders will also be accepted through the National Association. Flyers will be available to pick up in the 4-H Nature Center during the 4-H Fair or at the District Office after August 1st.



RULE 5

Well, it has been almost two years since the state of Indiana has required that an Indiana Department of Environmental Management, or IDEM, permit be obtained before any land disturbing activity takes place that effects 5 or more acres of land. Since that time, there have been a lot of questions asked about just exactly what is the developer or owners responsibility in the "Rule 5" process. Now that the rule is several year old, it may be possible to explain it simply.

First, however, I will explain "Rule 5". In October of 1992, the Indiana Water Pollution Control Board passed Indiana Administrative Code (IAC) 327. This Law was put in place to administer provisions set forth in the 1987 Federal Clean Water Act, and is charged with requiring a permit to discharge any point or non point source pollutants in the state of Indiana. Section 5 of this code addresses the permitting of Storm Water Run-off Associated with Construction Activities. IAC 15-5 or better known as "Rule 5" is administered and enforced by IDEM and technical assistance is provided by the local SWCD and/or Department of Natural Resources Division of Soil Conservation



Now that those muddy waters have been cleared up, I will explain the operators role in this rule.

First the operator, or person responsible for the project, usually the developed or owner, must not allow any sediment to leave the work site. The best way to do this is usually by erosion control. So before any earth work is started, an erosion and sediment control (E&SC) plan must be prepared to explain just exactly how this is to be done. Then that plan is sent to the local Soil and Water Conservation District (SWCD) for review. A copy is also to be included with the project work plans and followed completely by the workers on site, throughout the length of the project.

The the operator must complete a Notice of Intent or NOI letter and send this to the Department of Environmental Management in Indianapolis along with a \$100 permit fee, per project.

As soon as these steps are complete, and as long as the erosion and sediment control plan is being followed on the work site, the permit to operate is in place.

If the plan is not followed or any of the other responsibilities are not met, the site and operator is considered to be in potential violation of this rule and subject to penalties ranging from an out of compliance letter from IDEM to a stop work order and/or very sizable fine up to \$25,000 each day the project has operated without the permit.

In most cases the erosion and sediment control plan can be done when the initial project plans are being drawn. And a representative of the St. Joseph County SWCD is always more than happy to answer any questions or address any concerns anyone may have regarding this rule. For further information and assistance on Rule 5, contact the District at 291-2300.

COVER CROPS AND CONSERVATION COMPLIANCE

Cover crops can assist you in meeting your residue levels for conservation compliance on your highly erodible ground. Especially in situations following soybeans and corn silage, which have lower amounts of residue cover, a cover crop can provide the additional residue needed to keep you in compliance with your conservation plan. If you have highly erodible ground and livestock, a cover crop can help provide additional residue if you inject your manure.

Cover crops are grasses, legumes, or small grains grown primarily for seasonal protection and soil improvement. When deciding on a cover crop, there is an expense for establishment and suppression at planting time that needs to be figured. This additional expense also needs to be weighed against the potential of losing government benefits by not meeting the requirements of your conservation plan. If you have questions concerning cover crops establishment on your highly erodible ground, you can contact your local soil and Water Conservation District office or Soil Conservation Service Office.



SWCD TREE SALES PROGRAM

Do you know if you are on the St. Joseph County Soil and Water Conservation District's mailing list to order tree seedlings? Have you purchased trees in the last year or so? If not, or you would like to, we're looking for you. We have trees, wildflower seed, groundcovers and marking flags for sale. Just call 291-2300 and add your name to our database for newsletters, tree sales, NACD bounceback flyers, field days, etc. You can even become an affiliate member of the district and become a part of the soil and water conservation movement in St. Joseph County. For additional information, please call 291-2300 or stop by and visit with us during the hours of 7:00 a.m. - 4:30 p.m., Monday thru Friday!

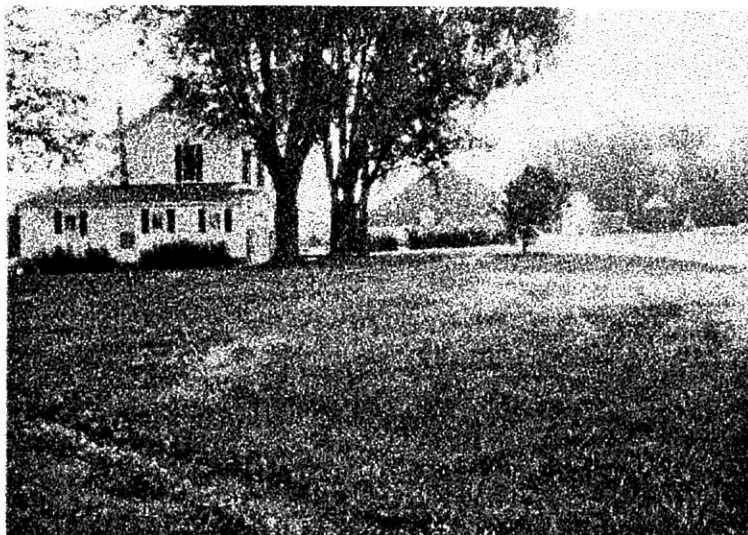


AG RESOURCE FIELD DAY FOLLOW UP

Over a hundred people attended the "hands-on" AG Resource Field Day sponsored by the St. Joseph County SWCD. Jack and Betty Henricks, North Star Cattle Company, were the hosts for the event that was held on Tuesday, July 12th, 1994. Purdue Specialists were on hand to discuss nutrient management, residue management, underground storage and fertilizer containment regulations and the Farm*A*Syst Program. Local Extension Educators, Tom Hampton and Kathy Bryant discussed Integrated Crop Management/Scouting and Stress Management and Nutrition respectively. Lance Hodge, J.F. New and Associates discussed benefits of wetlands, as well as wetland restoration, While Jeff Steinkraus, Bruce Wakeland Consulting Firm discussed the importance of tree planting and windbreaks. Other topics covered included the Tri-County Water Quality Project, MAX Program along with soil erosion, timber marking, engineering practices and rye cover crops. Bud Kerchove, Polk Twp. Fire Department in cooperation with the North Liberty Fire Department held a field demonstration on spilled farm chemical and the procedures taken when a spill occurs. S.J. Tatay Well Drilling Company conducted a well plugging demonstration for abandoned wells.

On behalf of the St. Joseph County SWCD, we would like to publicly thank Jack and Betty Henricks for their genuine hospitality and sincere cooperation in hosting the field day. We would also like to express our appreciation to the following supporters of the field day:

- *Agri-Labs, Inc.*
- *Bob's Country Store*
- *Chemical Tank Distributing*
- *DeKalb Seed - Jerry Knepp*
- *DeSchepper Farm Supply, Inc.*
- *Fair Oil, Inc.*
- *Farm Credit Association*
- *Farm Counseling Services*
- *First Source Bank*
- *Great Lakes Hybrids Seed*
- *J.F. New & Associates*
- *Lake's Farm Service*
- *Monsanto*
- *Pioneer Seed - Gordon and Jeff Peterson*
- *Plymouth Farm Center*
- *Purdue Cooperative Extension Service*
- *Reese Farm Equipment*
- *Stillwell Farm Fertilizers*
- *Teacher's Credit Union - Walkerton*
- *Terra Internation - Tom Bradford*
- *Wyatt Farm Center*
- *Zahl's Elevator*



<p>PLYMOUTH FARM CENTER, INC. 10209 Iris Road Plymouth, IN 46563 (219) 935-5500 1-800-487-3337 John Deere Lawn & Farm Equipt </p>	<p>LINEBACK REALTY SALES AND APPRAISALS Land - Commerical County Real Estate P.O. Box 2701 South Bend, IN 46680 (219) 233-3740</p>	<p>WYATT FARM CENTER INC. 66400 State Road 331 Wyatt, Indiana 46595 (219) 633-4017/1-800-447-4141 White-Hiniker-Kelley-New Holland-Kubota-Woods-Land Pride-M.F.-D.M.I.-Century Sprayers-Deutz-Allis</p>	<p><i>The programs and services of the St. Joseph County SWCD and the Soil Conservation Service are offered on a non-discriminatory basis without regard to race, color, national origin, religion, sex, age, marital status, or handicap.</i></p>
<p>ST. JOSEPH COUNTY FARM BUREAU, INC. 60455 U.S. 31 South South Bend, IN 46614 A Full Service Farm Organization</p>	<p>FRICK SERVICES - WYATT DIVISION P.O. Box 179 Wyatt, IN 46595 (219) 633-4065 Feeds - Grains Seeds - Fertilizers</p>	<p>LAKE'S FARM SERVICE, INC. Conservation - Fertilization Custom Application of Dry or Liquid Fertilizers 54300 Walnut Road New Carlisle, IN 46552 (219) 654-3116</p>	<p> Farm Credit Services <i>Experience built from the ground up</i> South Bend, Indiana (219) 291-1277</p>
<p>ZAHL'S ELEVATOR AND FEED MILL P.O. Box 66 New Carlisle, IN (219) 654-3625 Grain - Feeds Seeds - Fertilizer</p>	<p>WILSON AGR-SERVICE Lakeville, IN (219) 289-2101 (219) 784-3115 Bremen, IN (219) 546-2491 1-800-552-2828</p>	<p>KUHARIC'S AG LIMESPREADING SERVICE CULVERT SALES 57890 Crumstown Hwy South Bend, IN 46619 (219) 288-9410</p>	<p>AGP GRAIN, LTD. 1300 West 1st Road LaPaz, IN 46537 (219) 546-2491 1-800-552-2588</p>

ST. JOSEPH COUNTY SOIL AND WATER CONSERVATION DISTRICT
60455 U.S. 31 South
South Bend, IN 46614

NON-PROFIT ORGANIZATION

U.S. POSTAGE
PAID
SOUTH BEND, INDIANA
Permit No. 225