

60455 U.S. 31 South \* South Bend, Indiana 46614 \* Telephone 291-2300

Vol. 3, No. 1

Feb/Mar/Apr 1992

Editor: Rick Glassman

# NEWSLETTER

## 1992 ANNUAL MEETING REPORT

The 32nd Annual Meeting of the St. Joseph County Soil & Water Conservation District was held on Friday, January 17, 1992 at St. Adalbert's Parish Hall. The meeting was called to order by Chairman John Dooms, with introductions of board members and distinguished guests following. St. Adalbert's provided an excellent dinner of chicken, sausage, noodles, sweet and sour cabbage, green beans, and pie for dessert.

Immediately following dinner the election was held. Dale Stoner was re-appointed as supervisor and Randy Matthys was re-elected as supervisor.

Following dinner the evenings main entertainment, Sky Schultz, or as he is more commonly know as, "Professor Ooops!" provided a humorous look at the world we live in.

Awards were given to Dennis Schafer for Conservation Farmer of the Year. Lamoine Carter was recognized for Forestry Establishment and Wildlife Habitat Development. The Conservation Teacher of the Year went to the second grade teachers at LaVille Elementary School; Nancy Lineback, Mary Grebe, Judy Clady, Genna Carrol, Susan McGee, and Tami Bowman. The Take Pride in America Award was given to Eggleston Elementary School in the Constituent Organizations and Civic Associations Category, and McKinley Elementary School in the Education Institutions Category. A Special Recognition Award was presented to Bernie Byrd for his years of dedicated service to the St. Joseph County Soil & Water Conservation District.

\*\*\*\*\*

## 1992 INDIANA CONSERVATION PUBLIC SPEAKING CONTEST "INDIANA'S WATER - THE WELL OF LIFE"



The St. Joseph County SWCD and Farm Bureau are sponsoring the Local Conservation Public Speaking Contest. This year's speech contest will be held Wednesday, February 12, 1992 at the SWCD Office, 60455 U.S. 31 South, at 7:00 p.m.

CASH awards for 1st, 2nd, and

3rd Place.

Each speech should not be shorter than five (5) minutes or longer than eight (8) minutes.

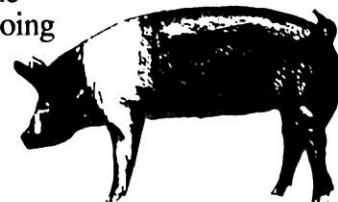
The contest is open to all freshmen, sophomores, juniors, and seniors that attend school within St. Joseph County.

If you would like more information or would like to make a reservation, please contact Rick Glassman at the SWCD Office at 291-2300.

\*\*\*\*\*

## AG DAYS March 13, 14, 15, 1992 Scottsdale Mall

Where can you see a goat being milked or a sheep being sheared to the background music of mooing cows and oinking pigs? Why AG DAYS of course! This year's AG DAYS promises to be as exciting as ever, with something for everyone.



Displays will include everything from farm equipment to environmental topics and concerns, with a host of critters in between.

Friday the 13th will be school day. Presenters will have literature for the students plus actual demonstrations. Reservations are needed for groups attending Friday.

So bring the family for a taste of Rural America. For more information or group reservations for Friday, contact Farm Credit Services by March 6, 1992 at 291-1277.

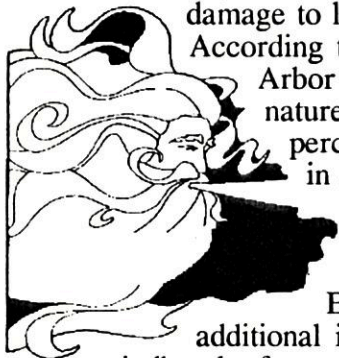
\*\*\*\*\*

## CALENDAR OF EVENTS

- January 1 - March 15 - Dairy Refund Payment Program - ASCS Office
- February 3 - March 13 - Disaster Sugn-up - ASCS Office
- February 10 - April 17 - 1992 Program Sign-up - ASCS Office
- March 12 - Tri-County Water Quality Meeting - 10:00 A.M. - SCS Office
- June 15 - June 26 - CRP Sign-up (Effective for 1993) - ASCS Office

## TREES FOR WINTER WARMTH

As winter digs it's heels in for the chilling and blustery months of February and March, our heating bills will continue to rise with little or no pity on our pocketbooks. One way of reducing the rising costs, is to utilize nature by planting trees. Windbreak plantings around your home and/or farmstead, can help lower the loss of heat in your home by reducing the cold air filtration, the drying effect on landscape plants, the abrasive effects of airborne particles, dust and dirt entering a building, and lowering the wind damage to limbs and buildings.



According to reports by the National Arbor Foundation, planting with nature can help you save 10-17 percent on your heating bills, and in some cases, as much as 40 percent depending on your location. Please contact our office or the Cooperative Extension Service for additional information on planting windbreaks for energy purposes.

The St. Joseph County Soil and Water Conservation District is sponsoring it's Tree Sales Program again this year with a variety of trees that can be used for windbreaks, Christmas trees, landscape, and reforestation. We also have two different kinds of packets available for sale along with wildflower seed. Order blanks can be found in local businesses or by calling the SWCD Office at 291-2300. Orders must be placed no later than March 1st for distribution in early April. For additional information, please contact the office.

\*\*\*\*\*

## SPECIAL THANKS TO SAM'S CLUB

The St. Joseph County Soil & Water Conservation District would like to thank Sam's Club, 5652 Grape Road, Mishawaka, for their generous contribution to our education program. The monies will be used to enhance the District's Environmental Curriculum and Resource Library and help establish Outdoor Environmental Labs on school property. These services and materials are available to all county educators, as well as, all youth and adult organizations.

We would again like to express our sincere gratitude to Sam's Club for their continued support of environmental programs within our county.

\*\*\*\*\*

## KNOW YOUR RESIDUE LEVELS

If you have been in the SCS Office in recent months, you know that the Highly Erodible Conservation Plans are now more concerned with actual residue left on the crops fields after planting. Why? Crop residue is a very important factor when figuring the amount of soil erosion in any particular field. The more residue left after planting a crop, the less the natural elements of wind and water can get to the soil and cause it to move or erode. Once soil leaves a field, the soils fertility and productivity drop. Furthermore, the soil usually ends up where it's not wanted, often in roadside ditches, streams, rivers or lakes. The cost of the clean-up of these areas is high.

Obviously, conservation tillage is a way to crop the field and still leave adequate amounts of residue on the field for erosion control. A tillage system is considered conservation tillage if it leaves at least 30% of the field surface covered with residue after planting. When the producers update their conservation plans, the amount of residue that they will be leaving on the field after crop planting is specified. Many of these producers want to know how they can tell how much residue is left once their crop is in the ground.



There are a number of ways this can be done. Purdue University Publication AY-269 discusses three (3) such methods. To get a copy contact the SCS/SWCD Office. Most of the methods involve actual field observation and/or measurements. Actual field walking is the best way to tell what your farm operations are leaving on your fields. If you need help determining how much residue you have in your field, contact your local SCS/SWCD Office. The technical staff will be glad to help.

The programs and services of the St. Joseph County SWCD and the Soil Conservation Service are offered on a nondiscriminatory basis without regard to race, color, national origin, religion, sex, age, marital status, or handicap.

<p>WYATT FARM CENTER INC. 66400 State Road 331 Wyatt, Indiana 46595 (219) 633-4017 1-800-447-4141 White-Hiniker-Kelley-New Holland-Kubota-Woods-Land Pride-M.F.-D.M.I. - Century Sprayers-Deutz-Allis</p>	<p>LINEBACK REALTY SALES AND APPRAISALS Land - Commercial County Real Estate P.O. Box 2701 South Bend, IN 46680 (219) 233-3740</p>	<p>PLYMOUTH FARM CENTER, INC. 10209 Iris Road Plymouth, IN 46563 (219) 935-5500 1-800-487-3337</p>	
<p>ST. JOSEPH COUNTY FARM BUREAU, INC. 60455 U.S. 31 South South Bend, IN 46614 A Full Service Farm Organization</p>	<p>WYATT TRADING COMPANY, INC. P.O. Box 179 Wyatt, IN 46595 (219) 633-4065 Feeds - Grains Seeds - Fertilizers</p>	<p>LAKE'S FARM SERVICE, INC. Conservation - Fertilization Custom Application of Dry or Liquid Fertilizers 54300 Walnut Road New Carlisle, IN 46552 654-3116</p>	<p> <b>Farm Credit Services</b> <i>Experience</i> <i>built from the ground up</i> South Bend, Indiana (219) 291-1277</p>
<p>ZAHL'S ELEVATOR AND FEED MILL P.O. Box 66 New Carlisle, IN Phone 654-3625 Grain - Feeds Seeds - Fertilizer</p>	<p>WILSON AGRI-SERVICE Lakeville, IN (219) 289-2101 (219) 784-3115 Bremen, IN (219) 546-2491 1-800-552-2828</p>	<p>KUHARIC'S AG LIMESPREADING SERVICE CULVERT SALES 57890 Crumstown Hwy South Bend, IN 46619 (219) 288-9410</p>	<p>AGP GRAIN, LTD. 1300 W. 1st Road LaPaz, IN 46537 (219) 546-2491 1-800-552-2588</p>