

Vol. 7, No. 1

Jan.-Mar. 1990

Editor - Jeff Fanson

60455 U.S. 31, South • South Bend, Indiana 46614 • Telephone 291-2300

Supplement to The Farmer's Exchange

NEWSLETTER

Wildlife Food Plot Program

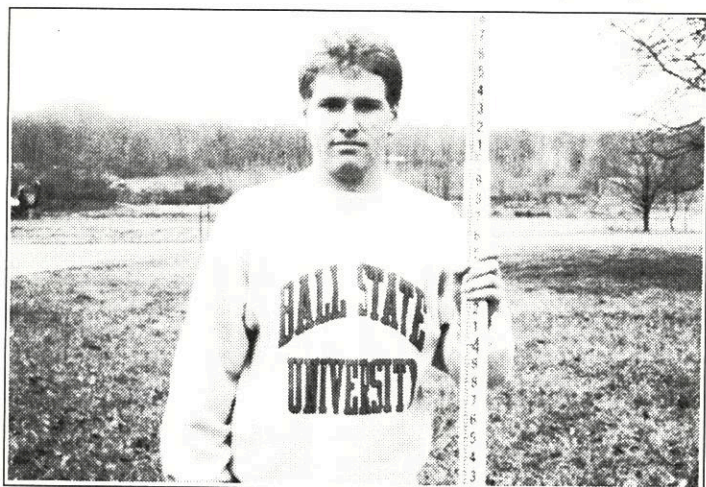


The IDNR Division of Fish and Wildlife will sponsor the Wildlife Food Plot Program again this spring. The program is a successful wildlife food and cover development effort that has the approval of both landowner and sportsman alike.

The four-pound sacks, which contain buckwheat seed as well as hybrid grain sorghum, may be picked up at the district office later this spring. The seed has an 80 percent germination rate and has no noxious weed seeds. The seed has not been treated with an insecticide or fungicide. It is recommended to plant the seed in long narrow strips to create more of the "edge" effect that wildlife prefer. Contact the SWCD office or stop in if you would like to reserve any wildlife seed for planting.

To properly evaluate the program, the wildlife biologist will be checking on many of the plots later in the year to make sure proper planting techniques have been followed.

"T-2000" Has New Employee



As of December 1989, St. Joseph, Elkhart and Marshall counties have a new Indiana Department of Natural Resources (IDNR) "T-2000" employee. John Law will be responsible for implementing the "T-2000" program in these counties. The goal of this program is to reduce soil erosion by installing erosion control practices that will reduce erosion and sedimentation on highly erodible ground to its tolerable limit, (T), by the year 2000.

John is a 24 year old native Elkhartan with a Natural Resources degree from Ball State University. Before joining the IDNR he worked for Elkhart Co. Highway and Park departments as well as a lawn care company. We are very happy to have John on board with us in the SCS office. John looks forward to meeting and working with you to help solve your erosion problems.

Find out more about John and the "T-2000" program by contacting the St. Joseph County soil and water conservation district by calling (219) 291-2300.

DISTRICT SPEECH CONTEST WINNER

Renee Lentine from Riley High School was selected as this year's speech contest winner. The contest was held on February 20, in the Farm Bureau Insurance Building, and was jointly sponsored by the St. Joseph County Soil and Water Conservation District and the St. Joseph County Farm Bureau, Inc. This year's theme was "Pure Water, Productive Soil - Basic For Life." Renee will now advance to the area competition to represent St. Joseph County.

GOOD LUCK RENE!



Renee displays the technique she will use to represent St. Joseph County at the Area I speech contest.

GIVE TREES A GOOD START

PLANT THE RIGHT TREE IN THE RIGHT PLACE

Do not plant:

- *pin oaks in alkaline soils
- *trees in old alkaline building rubble
- *willows in dry soils, pines in wet soils
- *birches in shade, dogwoods in unprotected open sites



Learn the biological requirements of your trees. Do not plant unless you plan to maintain.

PLANT PROPERLY

Do not:

- *crowd trees in small holes with compacted soil
- *over-amend the soil with humus
- *fertilize at planting time

Do prune dead and dying branches and roots.

KEEP GRASS AWAY

Do not:

- *water grass heavily near trees that normally grow on dry sites.
- *lime grass heavily near trees that grow best in acid soils
- *wound trees with lawnmowers and other machines

Heavy use of herbicides may harm trees.

BRACE, BUT NOT TOO TIGHTLY

Do not:

- *tie young trees so tightly they do not move
- *leave braces on after tree is established
- *kill bark with cords, wires, bands, etc.

PREVENT WOUNDS

Do not:

- *allow anyone to climb your tree with spikes
- *allow heavy construction machines near your tree
- *park cars near trees

Prune correctly.

CELEBRATE NATIONAL SOIL & WATER STEWARDSHIP WEEK

"Citizens of all Creation"
April 29 - May 6, 1990



Emphasizing everyone's role in protecting soil and water resources for future generations, the St. Joseph County Soil and Water Conservation District is encouraging local churches, organizations and individuals to join the nationwide observance of Soil and Water Stewardship Week, April 29 - May 6, 1990.

Eugene Myers, chairman of the SWCD's Stewardship Committee, said that while farmers and ranchers know that good conservation practices help increase yields and improve their profit potential, they also know the importance of passing on well cared for natural resources for future food producers. "We could give our children all the money in the world, but it would do them little good unless we give them a productive soil on which to live," said Myers.

Materials especially designed to convey the 1990 theme, "Citizens of all Creation," are being distributed by the SWCD office, and may be obtained by calling or visiting the district office at 60455 U.S. 31 So., South Bend, Indiana 46614 - 219-2300. Churches and other organizations are encouraged to take part.

Are You Custom Planting?

If you have a conservation tillage planter and are willing to custom plant some corn or bean acreage, please notify the district. The SWCD is trying to put together a list of farmers that have the time and equipment. Please list per acre charge, so that we can have our information as complete as possible.

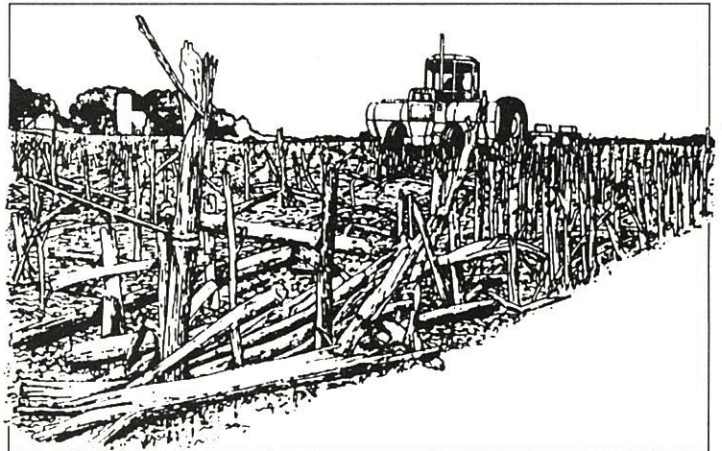
CUSTOM PLANTING	
Name _____	
Address _____	
Phone _____	
Type of Equipment _____	
Approx. # of acres willing to plant _____	
Charge Per Acre _____	
<p><i>*Return to: Steve DeCloedt</i> St. Joseph Co. SWCD 60455 U.S. 31 So. • South Bend, IN 46614</p>	

WILDFLOWER SEED AVAILABLE

The St. Joseph County SWCD has wildflower seed available for planting this spring. The seed comes in 1 oz. packets, each capable of covering 250 sq. ft. The packets contain 24 different species of flowers including annuals, bi-annuals and perennials, especially designed for planting in the midwest. Species represented include: Wallflower, Foxglove, Baby's Breath, African Daisy and Black-eyed Susan. Each packet sells for \$3.00 and comes with a complete set of flower descriptions as well as planting instructions. To order your seed, call or visit the Soil and Water Conservation District Office.



CONSERVATION TILLAGE EQUIPMENT AVAILABLE



Now is the time to sign up for no-till beans. The district will be renting the Lilliston no-till drill to farmers in the country for \$14.00 per acre, which includes the rental of a tractor along with the drill.

This set up is for farmers who wish to see if no-till beans will work on their fields. If someone is interested in custom planting, there are local dealers and landowners available to anyone in the county who wishes to custom plant no-till corn or beans this spring.

Sign-up for the district's equipment should be completed prior to April 1st. If you have any questions about the district's no-till bean program or need additional information on custom planters in the area, contact the SWCD office for more details.

SCS-SWCD DIRECTORY

- | | |
|---|--|
| Board of Supervisors:
John Dooms, Chm.
Richard Schmidt, V. Chm.
Eugene Myers
Randy Matthys
Dale Stoner | SCS: Deborah Knepp
District Conservationist
SWCD Office Staff:
Chris Sholly
Adm. Sec./Treas.
Steve DeCloedt
County Conservationist
Jeff Fanson
Environmental Educ. Spec. |
| Associate Supervisors:
James Kidder
Bernard Byrd
Ed Pollock
Gary Gadacz
Albert Gostola
Richard Hamman
Michael Hoskins, ASCS
Dave Kindt
Charles Lehman
Jay Lindenman
Joseph Long
William Millar | IDNR:
John Law
Erosion Control Technician |
- All programs and services of the Soil Conservation Service are offered on a non-discriminatory basis, without regard to race, color, national origin, religion, sex, age, marital status or handicap.

St. Joseph County Farm Bureau, Inc. 60455 U.S. 31 South South Bend, IN 46614 <i>A full service farm organization</i>	THIS SPACE AVAILABLE	Lake's Farm Service, Inc. Conservation - Fertilization Custom Application 54300 Walnut Rd. New Carlisle, IN 46552 654-3116	Zahl's Elevator & Feed Mill P.O. Box 66 New Carlisle, Ind. Phone 654-3625 Grain • Feed • Seeds • Fertilizer	Farm Credit Services 291-1277  Serving St. Joseph County's Agriculture and Rural Home Credit Needs.
J. KUHARIC CULVERT SALES <i>Drainage Culvert Sales & Fab.</i> 6" to 120" dia. in various lengths AG LIME SPREADING SERVICE 57890 Crumstown Hwy. South Bend, Ind. 46619 219-288-9410	Wyatt Trading Company, Inc. P.O. Box 179 Wyatt, Ind. 46595 219-633-4065 Feed • Grain • Seeds • Fertilizer	 MERCHANTS GRAIN, INC. 1300 W. 1st Rd. LaPaz, IN 46537 (219) 784-8233 IND. WATS 800-552-2588	WILSON AGRI-SERVICE Lakeville, Ind. (219) 289-2101 (219) 784-3115 Bremen, Ind. (219) 546-2491 1-800-552-2928	WYATT FARM CENTER, INC. 66400 State Road 331 Wyatt, Indiana 46595 (219) 633-4017 White - Hiniker - Yetter - Kelley Great Plains Drills - New Holland Kubota - Hardi Sprayers - Woods Hardee Cutters - Brent Carts M&W Gear Co. - Deutz-Allis