



St. Joseph
County
Soil & Water
Conservation
District



Today's Visions for Tomorrow's Future

September/October 2022
Volume 24, Issue 5

2903 Gary Drive, Ste 1, Plymouth, IN 46563
Website: stjosephswcd.org

Telephone (574) 936-2024
e-mail: info@stjosephswcd.org

What's Going On...

*Events hosted by the St. Joseph County SWCD
& Our Partners in Conservation*

September

5th - Labor Day -
Office Closed

20th - September Board
Meeting - 7:00 pm,
Location: Centre Township
Branch of the St. Joseph
County Public Library,
1150 Kern Rd., South Bend

October

8th - St. Joseph/Marshall
Invasive Plant Partnership
(SMIPP) Weed Wrangle -
10 am -12 pm, Location:
Potato Creek State Park

10th - Federal Holiday

18th - October Board
Meeting - 7:00 pm,
Location: Centre Township
Branch of the St. Joseph
County Public Library,
1150 Kern Rd., South Bend

22nd - Forestry Field Day -
9 am -12 pm, Location:
Elkhart Community Schools
ACCELL Farm,
51242 Ash Rd, Granger

St Joseph Co SWCD Welcomes New Administrative Assistant



Hello! My name is Nanette Haas and I am the new administrative assistant here at the SWCD.

I graduated from IUSB with a degree in Sociology. My prior work experience includes office administration, layout artist and claims investigator.

I am from the St. Joseph/Marshall County area and currently live in Plymouth.

Outside of work, I enjoy kayaking, working in the yard, feeding the birds and spending time with my family, especially my granddaughters, Emma & Harper.

A fun fact about me is my love for dachshunds. Between members of my family and I, we have 10!

I want to take this opportunity to express how excited I am to be a part of SWCD. You can contact me at 574-936-2024 ext. 4 or by email at Nanette.Haas@in.nacdn.net

Purdue Extension Office Welcomes New ANR Educator



Hello! My name is Emily Evers and I am the new ANR (Ag and Natural Resources) Educator for Purdue Extension in St. Joseph County.

I am a recent graduate from Purdue University where I majored in Agribusiness with minors in Farm Management and Organizational Leadership. While at Purdue, I was involved in Agribusiness Club, served as an International Ag Ambassador and was president of Adopt-A-Grandparent Club. I grew up on a family farm in Noble County, IN which raised corn, soybeans, alfalfa and Texas Longhorns.

I currently reside in New Carlisle, IN. I enjoy spending time with my family, playing Euchre, and baking. I had the pleasure of interning with Purdue Extension a few years ago and am so excited to start this new journey!

Sharing the Road During Harvest

Fall harvest season will soon be underway. Farmers will be hard at work, doing what they need to do to get crops out of the field. You will see an increase of tractors, combines and grain trucks on the same roads as vehicle traffic, going from field to field. Farm equipment is wide and can sometimes take up most of the roadway. For the farmer's safety, other drivers' safety, and your own safety, share the road and be cautious!

New Program Practices for Small Farmers

The NRCS has been working cooperatively with the Urban Soil Health Program to enhance our conservation programs with a new wave of practices aimed towards benefitting Urban Agriculture, Small Farmers, and Specialty Crop Farmers. Some of these practices include Seasonal High Tunnels, Nutrient Management, Mulching, Micro Irrigation, Conservation Crop Rotation, Cover Crops, Conservation Tillage, and Wildlife Habitat Plantings. If you believe you could fit into one of these categories or have an interest in these practices, please feel free to reach out to us at the NRCS/SWCD office by calling 574-936-2024 ext. 4 or emailing us at info@stjosephswcd.org.



Species of Special Interest Spotted!



On one of our field visits with a local landowner enrolled in a number of our conservation programs, including WRE – Wetland Reserve Easement Program and CRP—Conservation Reserve Program, we came across a truly rare find!

Below is a picture showing a cluster of naturally growing Queen of the Prairie (*Filipendula rubra*), one of Indiana's showiest and rare native flowers. This unique member of the rose family (*Rosaceae*) attracts a great deal of pollinators (beetles, butterflies, bees, etc.) to its large fluffy flowering heads, which almost resemble pink cotton candy from a distance.

This plant can grow between 6 to 8 ft tall, thrives in wet sedge meadows and calcareous fens, self-seeds and spreads via creeping rhizomes forming large colonies. Due to habitat loss this species is protected in a number of Midwest states, some listing it as either Threatened or Endangered.



These are the potential results of being an active and mindful steward of the land!

Call us today at 574-936-2024 ext. 4 to learn how you can enroll your property into our conservation and restoration programs.

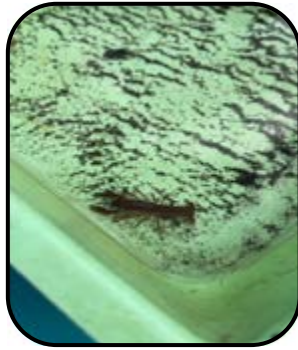
SWCD Summer Events and Programs

Summer was full of day camps!

The SWCD helped the St. Joseph County Parks and the Kroc Center with their day camps in July and August.



A camper is helping demonstrate how pollution affects a community using the EnviroScape model.



Campers found a crayfish while doing some pond scooping for macroinvertebrates.



The SWCD had a great time partnering with Unity Gardens for the Urban Conservation Series in June.



Our EEC and the campers survived the swamp stomp!

There are still spots available for scheduling programs!

You can fill out the online request form at <https://www.stjosephswcd.org/education>, or you can call or email Ally Pudlo, the SWCD Environmental Education Coordinator, to schedule your dates.

You can contact her at 574-936-2024 ext. 4 or at Allison.pudlo@in.nacdnet.net.

SMIPP Fall Weed Wrangle

Autumn Olive, Honeysuckle, and Multiflora Rose!
Oh my!

Don't let invasive plants give you a fright! Learn more about invasive plants and how you can identify and manage them by attending our Weed Wrangle®. We will be removing target plant species at Potato Creek State Park on Saturday, October 8th from 10am-12pm EDT.

Advanced RSVP encouraged for apple cider and a fall treat!

Where: Potato Creek State Park
25601 State Road 4, North Liberty, IN 46554

Time: 10am-12pm EDT

Date: Saturday,
October 8th, 2022

RSVP: Jodie Overmyer at
574-936-2024 ext. 3 or
Ally Pudlo at
574-936-2024 ext. 4



Forestry Field Day

FORESTRY
FIELD DAY

OCTOBER 22, 2022
9AM-12PM

Come join
Elkhart Co. & St. Joseph Co. SWCDs
and local partners in a forestry field
day! A land management & bio-
energy approach for conservation
practices



FEATURING:
G. PHILIP ROBERTSON, PH.D.
MSU Professor of Plant,
Soil & Microbial sciences

**FREE
EVENT!**

Elkhart Community Schools ACCELL Farm
51242 Ash Rd, Granger, IN 46530
574-523-2030
www.elkcoswcd.org



Visit us on Facebook 2903 GARY DRIVE PLYMOUTH IN 46563

St. Joseph County Soil And Water Conservation Partnership

Unlocking societal and environmental benefits in the Kankakee watershed by expanding conservation efforts.

Over 40 entities led by the Indiana State Department of Agriculture has applied for and been awarded funding for a Regional Conservation Partnership Program (RCPP) project. The primary goal of this project is to address flooding and nutrient pollution issues in Kankakee and Iroquois watershed. The Kankakee flows today through what was once one of the largest wetlands in North America. The partnership will work in the 11-county project area (including St. Joseph County) to facilitate the installation of 3000 acres of conservation cover, two-miles of two-state ditches, and 800 acres of wetland easements. A combination of modeling and water quality monitoring will be used to report project outcomes. More details will be provided as they become available. Please contact our office at 574-936-2024 ext. 4 if you are interested in participating or would like more information.

Are you ready to "GO GREEN" and help us save money and natural resources? We can deliver your "Conservation Kaleidoscope" newsletter by email ... Give us a call or send us an email and tell us you'd like to "GO GREEN" THANK YOU!!!!



Scan me to go Green!

SWCD Supervisors:
John Dooms, Chairman
Dave Vandewalle, Vice Chairman
Marty Lappin
Sam James
Chris Matthys

SWCD Associate Supervisors:
Dave Craft
Chuck Lehman
Randy Matthys
Richard Schmidt
Dave Straughn
Dru Wrasse
Mike Burkholder

SWCD Honorary Members:
Jerry Knepp
Keith Lineback
William Millar

St. Joseph County Soil & Water Conservation Partnership Staff:
Nanette Haas, SWCD
Sarah Longenecker, SWCD
Ally Pudlo, SWCD
Debbie Knepp, NRCS
Jorge Lozoya, NRCS

Farm Service Agency Staff:
Gideon Nobbe, CED
Devan Harrell
Katie Leitch
Aldona Martin

The U. S. Department of Agriculture (USDA) prohibits discrimination in all its programs and activities on the basis of race, color, national origin, gender, religion, age, disability, political beliefs, sexual orientation, and marital or family status. (Not all prohibited bases apply to all programs.) Persons with disabilities who require alternative means for communication of program information (Braille, large print, audiotape, etc.) should contact the USDA's TARGET Center at (202) 720-2260 (voice and TDD). To file a complaint of discrimination, write USDA, Director Office of Civil Rights, Room 326W, Whitten Building, 14th and Independence Avenue, SW, Washington, DC 20250-9410 or call (202) 720-5964 (voice or TDD). USDA is an equal employment opportunity provider and employer.