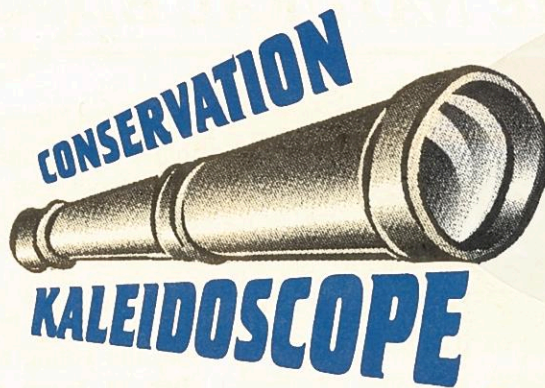




**St. Joseph
County
Soil & Water
Conservation
District**



Today's Visions for Tomorrow's Future

Jan/Feb/March 2008 5605 U.S. 31 South, Ste. 4 South Bend, IN Telephone (574) 291-7444 Ext.3 Editor: Troy Manges
Volume 10, Issue 1 Website: stjoseph.iaswcd.org Fax (574) 291-0284 Editor: Billie Jo Moak

Calendar of Events

January 1

New Years Day
Office Closed

January 21

Martin Luther King Day
Office Closed

January 22

SWCD Monthly Board Meeting
7:00 PM—Farm Bureau Mtg.
Room

February 5

Tree Selection & Planting
Seminar—6:30 PM—Farm
Bureau Mtg. Room

February 18

Presidents Day
Office Closed

February 19

SWCD Monthly Board Meeting
7:00 PM - Farm Bureau Mtg.
Room

February 22

49th Annual SWCD Meeting
6:30 PM—St. Adalbert's Hall

March 1

Tree Sales Order Forms Due!

March 17

SWCD Monthly Board Meeting
7:00 PM—Farm Bureau Mtg.
Room

March 28—30

Ag Days, St. Joseph County
Fairgrounds



ANNUAL MEETING

The 48th Annual Meeting of the
St. Joseph County
Soil and Water Conservation District
will be held on
Friday, February 22nd, 2008
6:30 P.M.
at
St. Adalbert's Hall
Tickets - \$8.00 per person

Reservations are due: Thursday, February 14th, 2008

**Tree Sales
Order Forms**

Order forms for the 2007-2008
Tree Sales Program have been
mailed. **The deadline to put in
your order is March 1, 2008.**
If you have any questions, please
call (574) 291-7444 Ext. 3.



**Tree Selection &
Planting Seminar**

Speaker John Scheetz from
Hensler Nursery, Inc.
February 5th, 2008
6:30 P.M.
Farm Bureau Mtg. Room
RSVP at (574)291-7444 ext.3
by February 4th, 2008

What's Inside . . .

The Natural Educator	2
Field Notes	3,4
Tree Sale Order Form	5,6
Urban Meanderings	7



THE NATURAL EDUCATOR

Snowman for the Birds

It's cold, it's snowing, so go outside and build a snowman. What better way to spend some family time and with a little thought do something good for the birds. Now, I know that a snowman is suppose to have eyes of coal and a carrot for a nose, but why not get creative and help out the local wildlife in the process. Cranberries make great eyes. Decorate it's chest with sunflower seeds, walnuts, pecans or other seeds and nuts. An ear of corn will make a perfect nose, hands and feet. And you have always wondered what you are going to do with that birthday sombrero; place it on the snowman's head and fill it with bird seed. The bottom line, have fun, connect with the family and go back inside and enjoy the wildlife show outside your window.



Scarecrow Bird Feeder

Another use of that big straw hat is to make a scarecrow bird feeder. Get an old lawn chair and some old clothes. Make a scarecrow using old leaves, straw or even newspaper for the stuffing. Don't forget the head. Place scarecrow in the chair, and attach the hat to its head. Fill hat with bird seed. **Now the fun part**, after the birds get used to feeding on your scarecrow, dress warm, remove the scarecrow and place the hat with seed on your head, have seat and remain still. It will not be long before the birds are landing on you! Never grab one, just enjoy. Note, little birds do not always land lightly, it won't hurt but you may be surprised.



The Mice of our Backyard

How many times have you seen a mouse and called it either a field mouse or a house mouse? Well, you may or may not have been correct.

We actually do have a House Mouse, but there are no "field mice" in the state of Indiana.

The House Mouse varies in color from light brown to black with its belly being lighter in color. They are from 5 to 7 inches long, including tail. While the House Mouse can and does live in the wild, it normally cannot compete with the other native mice and usually must have some type of human dwelling to survive.

Our two most common "field mice" are the Deer Mouse and White-Footed Mouse. Both have brownish fur on the back, with white stomach and feet. The White-Footed Mouse is a little darker, but basically you would need a ruler to tell the two apart. Both mice are between 5 to 8 inches long. They both stay active all year long, storing seeds for winter survival. But, they are truly omnivores, eating a variety of food from insects to fruit to seeds. Both species are capable of reproducing at 7 weeks of age.



Deer Mouse

The Deer Mouse is probably the one that we hear the most about because it's association with the Hantavirus and its part in helping to spread Lyme disease.

An interesting fact about Deer Mice is that the young are transparent for the first 24 hours of life, and you can actually see the milk going into their bodies as they nurse. Both Deer and White-Footed mice will live in people's houses, but what is interesting is that they normally live where they have access to the outside so that they can go out to forage for food, while the House Mouse will live throughout the house and may never go outside. While all of these mice can live to be several years old in captivity, normally the entire population is replaced within a year.

And while mice do at times drive us a little crazy, just think of all the animals that depend on them for food. Hawks, owls, snakes, coyotes, foxes and even fish, just to name a few.

One final note if you hear scratching in the walls or ceiling of your house and it seems to stay in one place and continue for a while. Congratulations you have mice living with you.



**DON'T FORGET TO
RECYCLE
REUSE
REDUCE
AND RETHINK**

**IF YOU ARE GOING TO PUT
THE RECYCLE BIN ON THE
CURB, DO NOT FORGET TO
BUY PRODUCTS MADE FROM
RECYCLED MATERIALS. IT IS
ALL PART OF THE CYCLE**

THINK GREEN



FIELD NOTES



Protect Your Natural Resources

Clean air, clean water, productive soils – these are all important for life as we know it here on earth. Our natural resources provide for our quality of life. They provide nutrition, hydration, aesthetic pleasure and economic well being. But how much thought do we actually give to the world around us? Do we take for granted the very things that give us life?



The USDA, Natural Resources Conservation Service and the St. Joseph County Soil and Water Conservation District (the St. Joseph County Conservation Partnership) work together to provide guidance, education and planning for the natural resources in St. Joseph County. We work with landowners to assess the condition of the soil, water, air, plants and animals on their property. We then provide technical and/or financial assistance to implement conservation practices that will protect, improve or enhance the resource concerns on the land.

The St. Joseph County Conservation Partnership can assist in the planning of energy conservation, conservation tillage, nutrient and/or pest management, animal waste storage



facilities, intensive grazing systems, wildlife habitats and wetland restorations to name just a few of our conservation practices. If you are interested in having a conservation planner assess the natural resources on your property or if you are interested in finding out more about the financial assistance available through our office, please contact us at (574)291-7444, ext 3. We would be happy to assist you with your conservation needs.

Taking The Challenge; Reducing The Risk

This article was submitted by Karen Mackowiak from the St. Joseph River Basin Commission.

Change is often associated with risk—anticipated increase in work, reduced production, or loss of money. However a new agricultural program is now available, that reduces that risk, and encourages producers to try new techniques, that would have little impact on reduced yield, or could even increase production while protecting the environment.

The **BMP Challenge** program is a partnership of several organizations including the Natural Resource Conservation Service that pays a producer should he/she experience loss associated with using different levels of nutrients or using different tillage techniques. Two options are associated with the project: Nutrient BMP Challenge and the Reduced Tillage Challenge.

The exciting news for the St. Joseph River Basin is both Indiana and Michigan portions are participating in the Challenge program. Not all states are lucky.

As with any program there are some limits for participation, but this allows a greater number of participants to benefit. These limits include:

First: Only producers growing corn for grain or silage qualify for participation in the Challenge.

Second: A limit of 160 acres can be incorporated in the Program.

Third: If you earn more money by participating in the Challenge Program, you will be asked to contribute 33 percent of your savings, up to \$6.00/acre, back into the Program to allow others to participate in the future.

How do the Nutrient BMP and Reduced Tillage Challenge programs work? With the Nutrient BMP Challenge, the producer designates the acreage to be included in the Program. On the quarantined strip, nutrients are applied at the rate the producer normally uses. Working with a crop advisor, the producer applies to the remaining portion of the designated field, a university recommended level of nitrogen, potassium and phosphorous.



*Left: Crop advisor with Farmer.
Below: Fertilizer being applied with a variable rate spreader.*





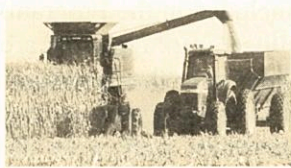
FIELD NOTES

Once crops are harvested, the producer and crop advisor evaluate the yield differences between the historic nutrient application and the BMP Challenge application rate. If there is a loss in yield, the BMP Challenge program will reimburse the producer based on a recorded yield loss, minus the nutrient savings.



No-till planting corn into soybean stubble.

The Program works similarly for the Reduced Tillage BMP Challenge. With this program, the producer uses their conventional tillage practices. The remaining portion of the field is managed using reduced tillage practices. A crop advisor will work with the producer to set up tillage equipment, visit the plot during the growing season and assess crop progress.



If yield loss is assessed as a result of the change in tillage methods, the producer will be compensated, based on the formula of yield loss minus savings associated with the reduced tillage.

Why not take the Challenge? Yields could be the same or better. The producer has evaluated evidence how

these practices work on specific fields. Any risk associated with the a potential decline in production is compensated for through the Challenge program, and the producer can revert back to the historic practices should the new ones fail.

The goal of the Challenge program is to demonstrate to producers the advantage of using better nutrient management and less tillage. The final result is better production, reduced risk of ground and surface water contamination associated with over-application of nutrients, and control of sediment runoff associated with erosion. A win for the producer and a win for the environment!

For more information about these programs search the Web at www.bmpchallenge.org or call the BMP Challenge at (608) 663-4697.

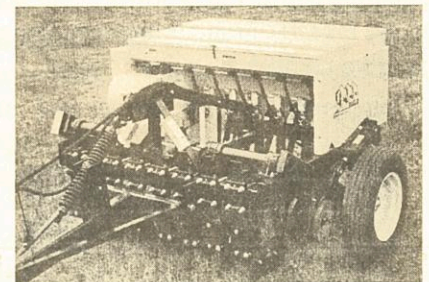
New SWCD Administrative Assistant



Hello, my name is Billie Jo Moak. I am the new Administrative Assistant for the St. Joseph County SWCD. I reside in New Carlisle and have been involved with St. Joseph County 4H for 6 years and also participate in Ag Days. I am excited about my new position and to be of service for those who use the various programs within the conservation partnerships. Thank you all for such a warm welcome!

No-till Warm Season Grass Drill Available

Are you planning on planting some warm season grasses (WSG) for wildlife habitat or interseeding a pasture or hay field next year? St. Joseph County SWCD has a No-till WSG Drill available for use. If you are planting wildlife habitat there is a \$25 user fee, and if you are planting hay or pasture there is a \$50 user fee plus for every acre above 5 acres you plant there is a \$5/acre fee.



The drill has a 6 foot planting width and 3 seed boxes for planting a variety of seed. The front box is used to plant small seeds such as wildflowers, clovers and alfalfa. The middle box is used to plant WSG or prairie grasses such as Little Bluestem and Indiangrass. The back box is used to plant cool season grasses such as Orchardgrass, Timothy and Ryegrass or food plot seed such as Sunflowers and Sorghum.

You need a tractor to pull the drill that has a minimum horsepower rating of 50. The tractor also needs to have a place to hook up 2 hydraulic hoses to raise and lower the drill.

If you are interested in scheduling the WSG drill to use this spring or next fall, or have other questions, please give us a call at (574) 291-7444 ext. 3.

SPECIES INFORMATION SHEET

KEY

SOIL DRAINAGE	PLANT PRODUCTS	SUNLIGHT NEEDS	GROWTH RATE
(W) - Wet (D) - Dry	C - Cone FR - Fruit	S - Shade FS - Full Sun	SL - Slow F - Fast
(M) - Moist	N - Nut S - Seed FL - Flower	PS - Partial Sun	M - Medium

ENVIRONMENTAL IMPROVEMENT USE			
B - Borders, Screens	E - Erosion Control	S - Shade	W - Windbreak
Be - Beauty	H - Home Sites	T - Timber	WL - Wildlife

SPECIES	MATURE HEIGHT	GROWTH RATE	SOIL DRAINAGE	PLANT PRODUCTS	SUNLIGHT NEEDS	SALT TOLERANT	REMARKS
EVERGREENS							
American Arborvitae	30-60'	M	Most Soils	C/S	FS	NO	B, Be, E, H, W, WL
Blue Spruce	80-100'	SL - M	M, D	C/S	FS	YES	Be, E, H, W, WL
Douglas-Fir	80-200'	M - F	M, D	C/S	PS-FS	INTERMEDIATE	Be, E, H, T, W, WL; Makes a good christmas tree
Norway Spruce	50-75'	M - F	M	C/S	FS	NO	B, Be, E, H, W, WL
White Pine	75-100'	F	M, D	C/S	PS-FS	NO	B, Be, E, H, T, W, WL
Canadian Hemlock	40-70'	M	M	C/S	S-FS	NO	B, Be, E, H, W, WL; Can be
DECIDUOUS TREES							
Black Walnut	70-100'	M - F	M	FL/FR/N	FS	YES	timber
Chinese Chestnut	40-60'	SL - M	D	FL/FR/N	FS	NO	Be, H, S, WL; plant 2 for nuts;
Hybrid Poplar	70-80'	Very Fast	Most Soils	FL/FR/S	PS-FS	INTERMEDIATE	Be, E, H, S, T, W, WL; 5-8'/year
Ohio Buckeye	40-60'	M	M, D	FL/FR/N	PS-FS	INTERMEDIATE	Be, H, T, WL
Red Maple	40-60'	M - F	Most Soils	FL/FR/S	PS-FS	NO	Be, E, S, H, T, WL; Fall color!
River Birch	60-80'	M - F	W, M	FL/FR/S	PS-FS	INTERMEDIATE	Be, E, H, S, T, WL
Red Oak	75-100'	M - F	M, D	FL/FR/N(acorn)	FS	Moderate	Be, E, H, T, WL
Sugar Maple	60-80'	SL - M	M, D	FL/FR/S	PS-FS	NO	Be, E, H, S, T, WL
Tulip Poplar	70-100+'	F	M, D	FL/FR/S	PS-FS	INTERMEDIATE	Be, E, H, S, T, WL; State tree
White Oak	60-80'	SL	W	S/N(acorn)	FS	Moderate	Be, T, WL
FLOWERING TREES AND SHRUBS							
Common Lilac	10-20'	M - F	M, D	FL/S	PS-FS	YES	B, Be, H, WL; Beautiful flowers
Ninebark	6-10'	M - F	M, D	FL/FR/S	PS-FS	INTERMEDIATE	B, Be, H, W, WL; Great native wildlife shrub
Nannyberry	12-15'	F	M, D	FL/FR	FS	Limited	B, W, WL
Red Bud	25'-35'	M	D	FL/FR/S	S-FS	NO	Be, H, S, WL; Spring Color!!!
Red-Osier Dogwood	4-10'	3-4 ft/year	W	FL/FR	PS-FS	Sometimes	Be, E, H, S, W, WL
Serviceberry	6-15'	M - F	M, D	FL/FR	PS-FS	INTERMEDIATE	B, Be, H, W, WL
GROUND COVER							
Pachysandra	10-12"	SL - M	M	FL/FR	PS-S	NO	B, Be, E, H; Thrives under pines
WILDFLOWER SEED							
American Wildflower Mix	12-36"	SL - M	Most Soils	S/FL	FS-PS	YES TO NO DEPENDING ON VARIETY	Be, H, WL
Bird & Butterfly Mix	12-36"	SL - M	Most Soils	S/FL	FS-PS		Be, H, WL

Tree Pick-Up Date is April 19, 2008

The St. Joseph County SWCD is sponsoring a Tree Selection and Planting Seminar on **February 5, 2008 at 6:30 PM**. Please call the office for details and to reserve your spot.

Terms and Conditions

1. Orders of 500 or more trees **per species** receive a discount. Call for pricing information.
2. Orders must be **postmarked** no later than: **March 1, 2008.** Orders will be filled on first come first served basis.
3. Trees are available to anyone and may be planted without restriction.
4. We reserve the right to make alterations if necessary.
5. We **DO NOT** furnish replacements.
6. Sizes may vary due to weather conditions beyond our control.
Make all checks payable to: St. Joseph County SWCD
 5605 U.S. 31 South, Suite 4
 South Bend, IN 46614
 (574) 291-7444, Ext. 3

Name _____

Address _____

City _____ State _____ Zip _____

() - _____

Telephone _____

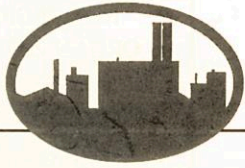
Order #: 200800-

***** Confirmation of orders and notification of date and time of pick-up will be sent out in late March 2008. *****

Fill in Number of packages and total	Pack of 5	Pack of 10	Pack of 25	Total \$\$
American Arborvitae 12-20"	x \$ 7.50	x \$ 14.00	x \$ 33.50	
Blue Spruce 12-20"	x \$ 8.50	x \$ 16.00	x \$ 38.50	
Douglas-Fir 14-24"	x \$ 7.50	x \$ 14.00	x \$ 33.50	
Norway Spruce 14-26"	x \$ 8.50	x \$ 16.00	x \$ 38.50	
White Pine 14-24"	x \$ 8.50	x \$ 16.00	x \$ 38.50	
Canadian Hemlock 12-24"	x \$ 8.75	x \$ 16.50	x \$ 39.75	
Black Walnut 16-24"	x \$ 5.50	x \$ 10.00	x \$ 23.50	
Chinese Chestnut 18-30"	x \$ 6.30	x \$ 11.60	x \$ 27.50	
Hybrid Poplar 24-36"	x \$ 7.80	x \$ 14.60	x \$ 35.00	
Ohio Buckeye 12-18"	x \$ 7.70	x \$ 14.40	x \$ 34.50	
Red Maple 18-24"	x \$ 7.90	x \$ 14.80	x \$ 35.50	
River Birch 14-26"	x \$ 7.50	x \$ 14.00	x \$ 33.50	
Red Oak 20-28"	x \$ 5.50	x \$ 10.00	x \$ 23.50	
Sugar Maple 12-18"	x \$ 7.20	x \$ 13.40	x \$ 32.00	
Tulip Poplar 18-24"	x \$ 7.80	x \$ 14.60	x \$ 35.00	
White Oak 14-20"	x \$ 5.50	x \$ 10.00	x \$ 23.50	
Common Lilac 18-24"	x \$ 6.90	x \$ 12.80	x \$ 30.50	
Ninebark 18-24"	x \$ 7.00	x \$ 13.00	x \$ 31.00	
Nannyberry 12-26"	x \$ 6.00	x \$ 11.00	x \$ 26.00	
Red Bud 12-18"	x \$ 6.40	x \$ 11.80	x \$ 28.00	
Red Osier Dogwood 16-28"	x \$ 5.50	x \$ 10.00	x \$ 23.50	
Serviceberry 18-30"	x \$ 8.80	x \$ 16.60	x \$ 40.00	
Pachysandra (25 plants)			x \$ 11.50	
American Wildflower Mix (1 oz.)	x \$ 7.00			
Bird & Butterfly Mix (1 oz.)	x \$ 7.00			

CK# _____ Date _____ By _____ ** All prices include sales tax ** Total Order \$ _____

The programs and services of the St. Joseph County SWCD are offered on a nondiscriminatory basis without regard to race, color, national origin, sex, marital status, age or disability. We are an equal opportunity employer.



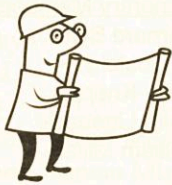
URBAN MEANDERINGS

MISHAWAKA JOINS FORCES WITH ST. JOSEPH COUNTY & THE SWCD



In spring of 2007, personnel from St. Joseph County, the Soil & Water Conservation District and the City of Mishawaka began drafting an agreement that would alter the role of the SWCD in the City of Mishawaka's MS4 program. For projects proposed within the City of Mishawaka jurisdiction, the contract brings about some changes to the Storm Water Pollution Prevention Plan (SWPPP) submittal and the site inspection processes, which may be of interest to developers and erosion control plan preparers.

Changes in Submittal & Inspection Process



In the past, plans for developments of less than 1 acre were being submitted to the City Planning Department. Meanwhile, erosion control plans for sites involving one acre or more were being submitted to the SWCD under Rule 5. With the new County -City-District agreement, SWPPP's for all projects within the City, no matter the size of the project, will need to be submitted to the City of Mishawaka Planning Department. Plan reviews for City of Mishawaka projects that are greater than one acre in area will then be delivered to the SWCD for review, but returned to the City

thereafter. The City of Mishawaka will then be responsible for inspecting erosion control measures on the active site.

Erosion control plans for sites within the City of Mishawaka can be delivered to the following address:

City of Mishawaka
Planning Department
ATTN: Melissa McGuire,
MS4 Coordinator
• 600 E. 3rd Street
Mishawaka, IN 46544



Upon receiving a SWPPP approval, do not forget to submit a Notice of Intent (NOI) to IDEM and a copy of the NOI to the City Planning Department.

Other Changes

Sites greater than 1 acre that were proposed after January 1, 2007 and are located within the City of Mishawaka were turned over to the City as of October 14, 2007. Thus, all Notice of Terminations (NOT's) for these projects must be submitted to the City of Mishawaka Planning Department instead of the Soil & Water Conservation District.

Questions regarding erosion control plans for sites within the City of Mishawaka can be addressed by emailing Jenny Davis at jenny.davis@IN.nacdnet.net or Melissa McGuire at mmcguire@mishawakacity.com. You may also call the St. Joseph County Soil & Water Conservation District at (574)291-7444, ext. 3 to address any matters related to Rule's 5 or 13.

MS4 CONTACT INFORMATION UPDATE

Over the past few months, there have been changes to the MS4 staff in St. Joseph County. The following is a list of persons able to address MS4 issues in St. Joseph County:

City of South Bend

Carl Littrell, City Engineer
City of South Bend Department of Engineering
Phone: (574)235-5937

City of Mishawaka

Melissa McGuire, MS4 Coordinator
City of Mishawaka Planning Department
Phone: (574)258-7113
Email: mmcguire@mishawakacity.com

St. Joseph County

Jessica Clark, MS4 Operator
St. Joseph County Department of Public Works
Phone: (574)235-9626
Email: jjclark@co.st-joseph.in.us

St. Joseph County Soil & Water

Jenny Davis, MS4 Conservationist
Phone: (574)291, 7444, ext. 3
Email: jenny.davis@IN.nacdnet.net
-OR-
Troy Manges, County Conservationist
Phone: (574)291-7444, ext. 3
Email: troy.manges@IN.nacdnet.net





St. Joseph County Soil and Water
Conservation District
5605 U.S. 31 South, Suite 4
South Bend, IN 46614

NON PROFIT
ORGANIZATION
US POSTAGE PAID
SOUTH BEND, IN
PERMIT NO. 225

St. Joseph County Soil And Water

Supervisors:

John Dooms, Chairman
Paul Williams III, V-Chairman
Dave Craft, Member
Jan Ivkovich, Member
Carole Riewe, Member

Associate Supervisors:

John Kulwicki
Melvin Kulwicki
Jim LaFree
Charles Lehman
Joe Long
Randy Matthys
Eugene Myers
Richard Schmidt
Dale Stoner

MISSION

To provide guidance and education to the youth and adults of St. Joseph County and to administer programs to preserve, protect and improve soil, water, air, plant, and animal resources for future generations.

Honorary Members:

Bernard Byrd
Al Gostola
Jerry Knepp
Keith Lineback
William Millar

Office Staff:

Debbie Knepp, NRCS
Rafael Vega, NRCS
Jenny Davis, SWCD
Rick Glassman, SWCD
Troy Manges, SWCD
Billie Jo Moak, SWCD

Farm Service Agency Staff:

Mike Hoskins, CED
Helene Cannoot
Dee Fox
Cindy Philhower
Denise Trimboli